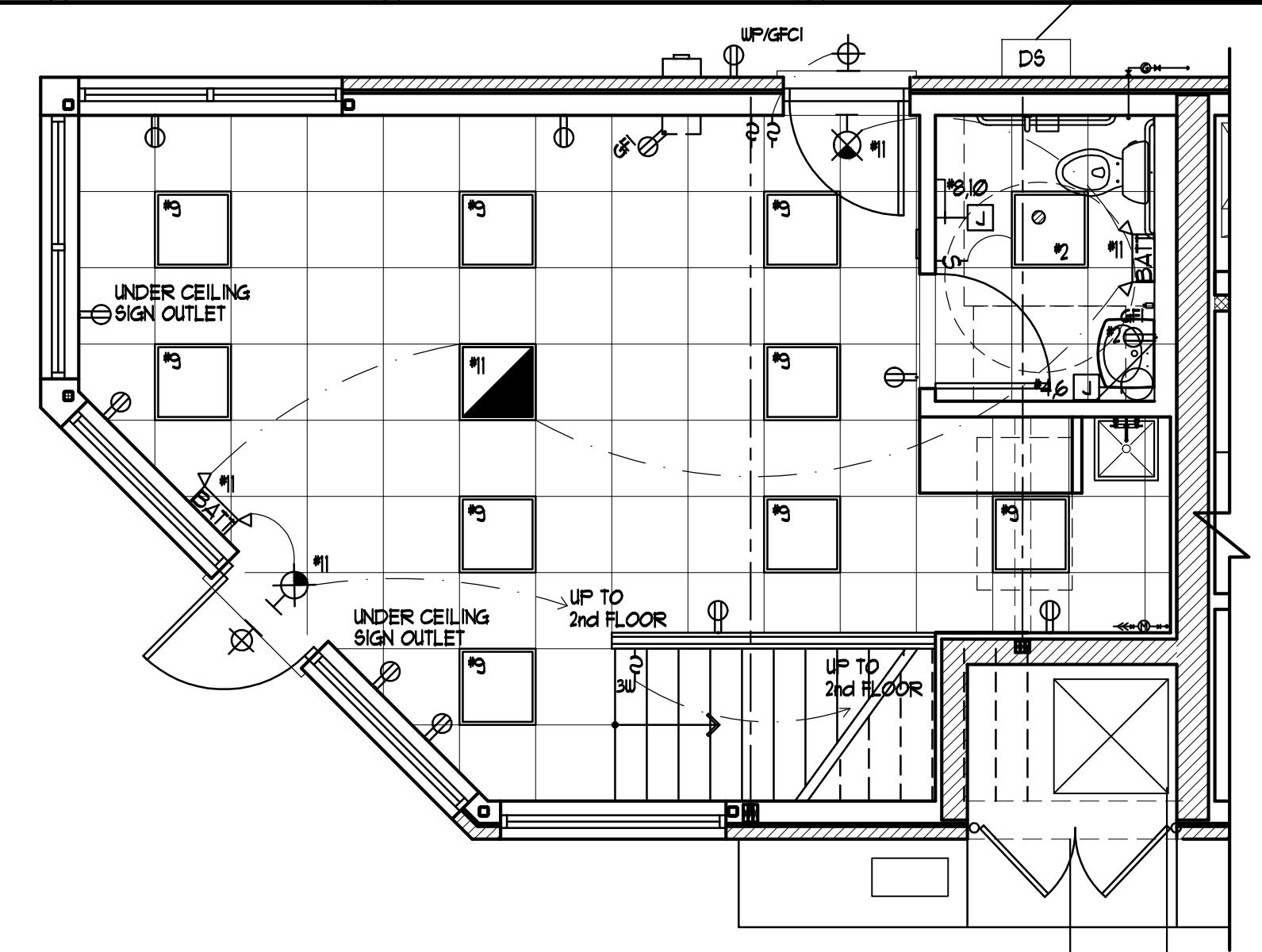


ELECTRICAL LEGEND FOR COMMERCIAL UNIT

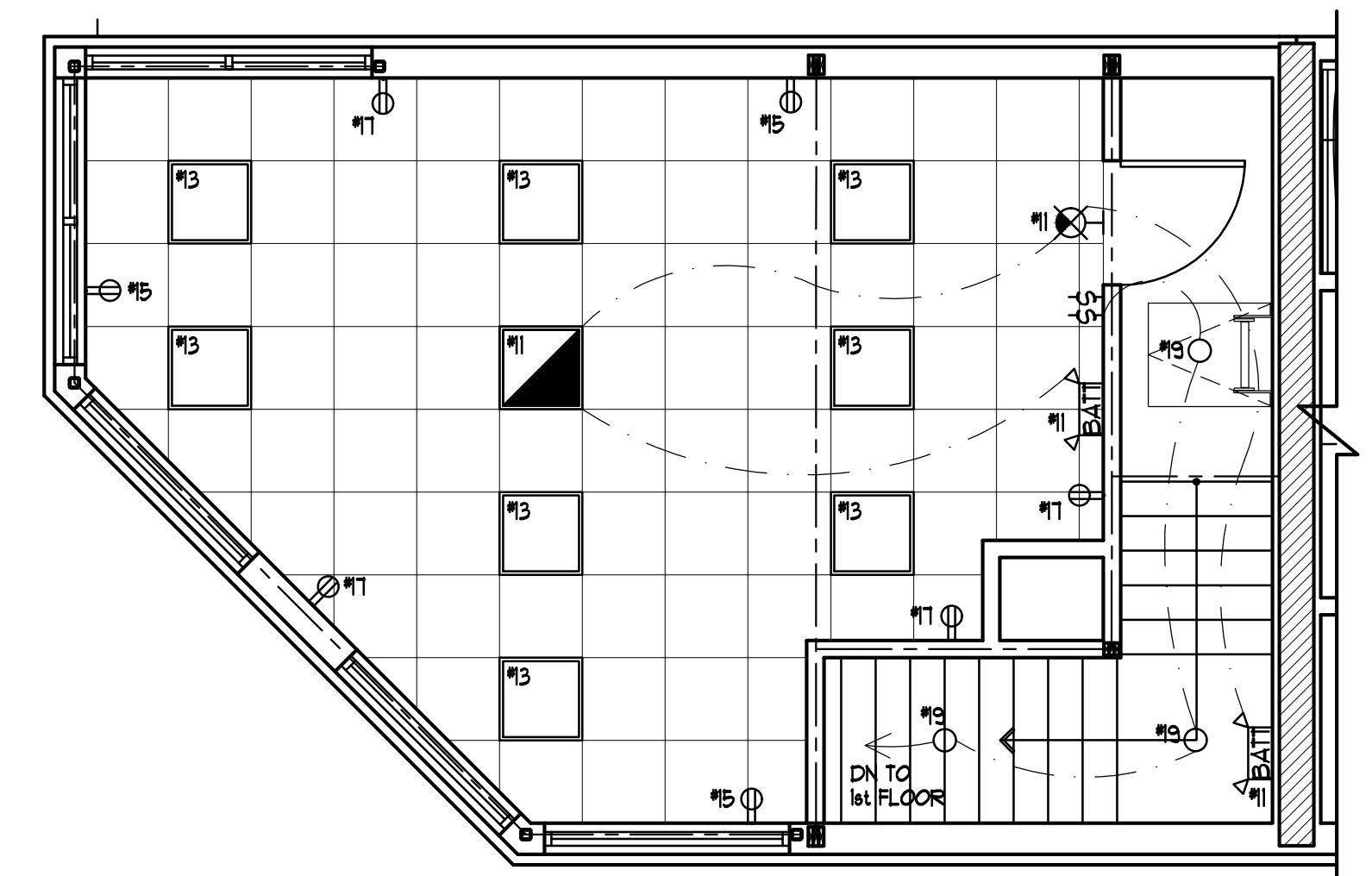
	2'x2'	FLUORESCENT LIGHTING FIXTURES AND OUTLETS, W/ T-8 LAMPS
		NITE LIGHT
		EMERGENCY BATTERY LIGHTING UNIT MTD. MINIMUM 1'-0" AFF.
		EMERGENCY DIRECTIONAL EXIT SIGN, SEE SCHEDULE FOR DETAILS. SHADED SIDE DENOTES FACE OF WORDING AND/OR ARROW WHEN SHOWN
		JUNCTION BOX AND FLEXIBLE CONNECTION AS REQUIRED.
		DUPLEX RECEPTACLE 20A/250V, 2P3W/GRD. NEMA 5-20R
		DUPLEX RECEPTACLE 20A/250V/2P3W/GRD. GROUND FAULT INTERRUPTER TYPE.
		TELEVISION JACK
		MOTORIZED DAMPER
		POWER DISTRIBUTION PANEL 200/120V, 3 PHASE, 4W OR AS NOTED.
		TELEPHONE OUTLET "W"-INDICATES WALL PHONE, "P"-PUBLIC PHONE, "J"-JACK OUTLET, "H"-HOUSE PHONE.
		TELEPHONE/DATA OUTLET

NOTE: ALL LIGHTS TO BE LED



1st FLR ELEC. PLAN FOR COMMERCIAL UNIT

SCALE: 1/4" = 1'-0"

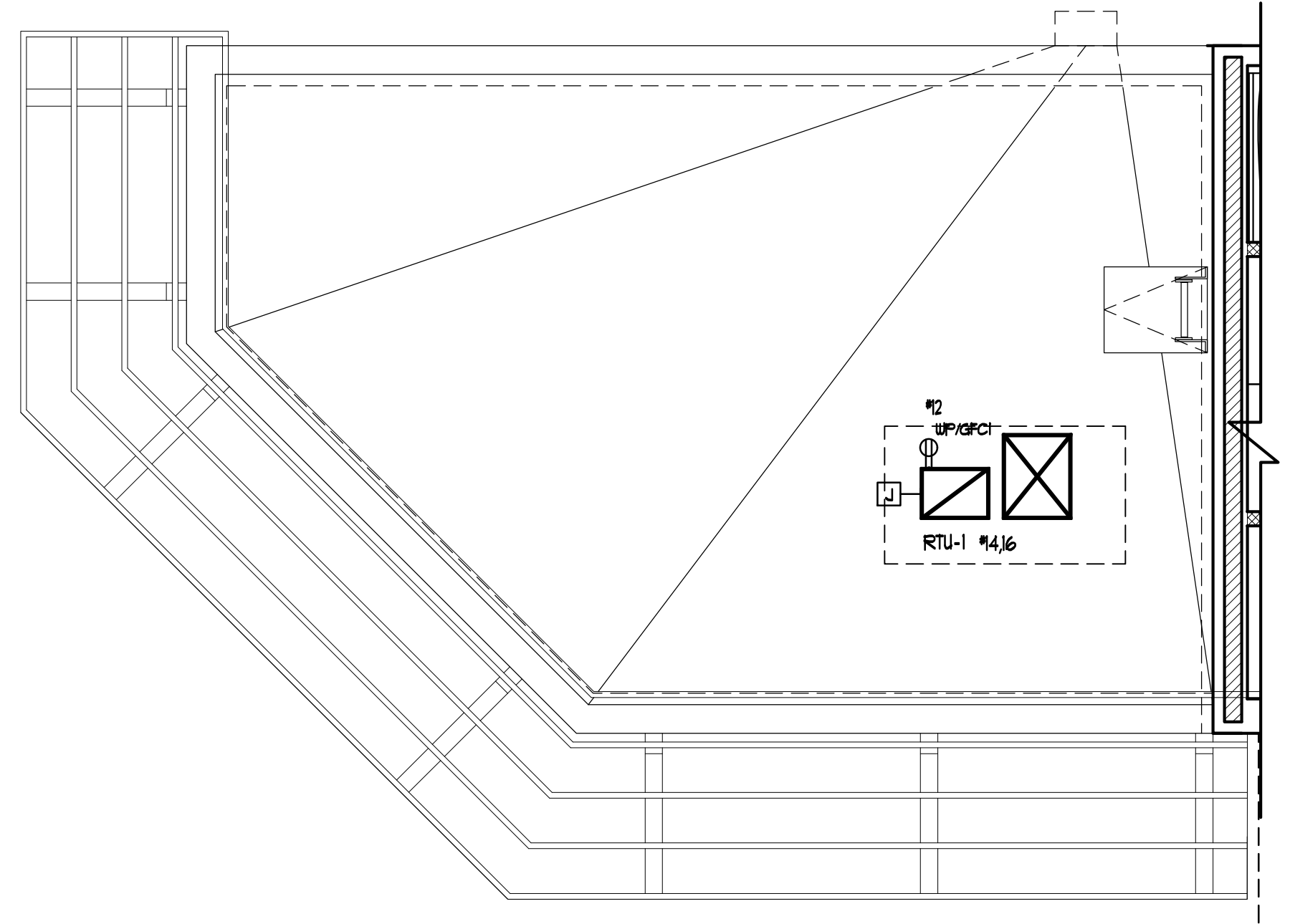


2nd FLR ELEC. PLAN FOR COMMERCIAL UNIT

SCALE: 1/4" = 1'-0"

NOTE: NEW ELECTRICAL SERVICE

PANEL: LP-1 200A ELECT. PANEL 400A BUS		SURFACE MOUNTED		MAINS 400A MLO 22000 AIC	
120/208V, 1 PHASE, 3 WIRE					
CCT NO.	DESCRIPTION	BREAKER SIZE/POLES	PH A VA	PH B VA	REMARKS
1	1st FLOOR OPEN AREA OUTLETS	20 A	800		
3	1st FLOOR OPEN AREA OUTLETS	20 A		600	
5	1st FLOOR CLG OUTLETS (SIGNAGE)	15 A	400		
7	GFCI OUTLETS	20 A		800	
9	1st FLOOR OPEN AREA LIGHTS	15 A	540		
11	EMERGENCY LIGHTS	15 A		300	
13	2nd FLOOR LIGHTS	20 A	480		
15	2nd FLOOR OUTLETS	20 A		800	
17	2nd FLOOR OUTLETS	20 A	600		
19	STAIRCASE LIGHTS	15 A		40	
21	EXTERIOR LIGHTS & OUTLETS	15 A	260		
23	OUTDOOR SIGN	20 A		800	
25					
27	SPARES				
29					
31					
33					
35					
37					
39					
41					
2	1st FLOOR TOILET	15 A	150		
4	HWH (6 GAL.)	1 P		1000	
6	HWH (6 GAL.)	30 A	1000		
8	HAND DRYER	1 P		1000	
10	HAND DRYER	30 A	1000		
12	ROOF OUTLET	15 A		600	
14	RTU-1	1 P	3500		
16	RTU-1	30 A		3500	
18	ROOF EXHAUST FAN	20 A	600		
20					
22	SPARES				
24					
26					
28					
30					
32					
34					
36					
38					
40					
42					
	CONNECTED PHASE VA		9,330	9,440	
	TOTAL CONNECTED VA		18,110 KW		
	TOTAL CONNECTED AMPS		78.21 A		



ROOF ELEC. PLAN

SCALE: 1/4" = 1'-0"

ANTONIO FANIZZA ASSOC. LTD
ARCHITECTS
2343 LECANER LANE
DEER PLAINES, ILLINOIS 60016
TEL: (847) 823-5664 FAX: (847) 823-1664
E-MAIL: ANTONIO.FANIZZA@CORCEL.COM

© 2016 ANTONIO FANIZZA ASSOC. LTD. THESE DRAWINGS AND SPECIFICATIONS ARE PROPERTY OF ANTONIO FANIZZA ASSOC. LTD. AND ARE NOT TO BE REPRODUCED, COPIED, OR TRANSMITTED IN ANY FORM OR BY ANY MEANS, WITHOUT WRITTEN AUTHORIZATION. UNAUTHORIZED USE IS NOT ALLOWED. IT IS FURTHER ADVISED PRIOR TO DRAWING USE, ALL FEES HAVE BEEN PAID IN FULL. FAILURE TO DO SO, THE USER WILL BE RESPONSIBLE FOR ALL COURT COSTS AND LEGAL FEES.

I HEREBY CERTIFY THAT THIS PLAN AND SPECIFICATION WAS PREPARED BY ME OR UNDER MY DIRECT SUPERVISION AND THAT I AM A DULY REGISTERED ARCHITECT UNDER THE LAWS OF THE STATE OF ILLINOIS AND THE VILLAGE OF BOCARON AND IN COMPLIANCE WITH ALL APPLICABLE CODES INCLUDING THE ENVIRONMENTAL BARBERS ACT (40-150) AND THE ILLINOIS ACCESSIBILITY CODE (23 ILCS 005/005.000) AS SANCTIONED BY MY HAND AND SEAL.

NO.	REVISION
1	PER CITY COMMENTS 02/06/16
2	PER CITY COMMENT #04/28/17
3	PER CITY COMMENT #06/28/17
4	PER DOT REQUIREMENTS 02/22/17

CERTIFICATION AND SEAL

DRAWING NAME:
ELEC. PLANS FOR COMMERCIAL AREA

PROJECT NAME:
KANDU TOWNHOMES
8163 LINCOLN AVE
SKOKIE, ILLINOIS

released to const.
job no. 1651
scale AS SHOWN
date 10.14.2016
drawn by WU
checked by AF

sheet
E-1.1

FOR PERMIT ONLY